



Front Range Passenger Rail District

Overview Presentation

August 2023

FRPR FRONT RANGE
PASSENGER RAIL

Planning a New Transportation Option for Colorado's Front Range





A Growing Need for a Transportation Solution

LIVE UPDATES

Snowstorm in Colorado leads to dangerous driving conditions and broken branches, CDOT issues warning for Denver area

BY CBS NEWS COLORADO | BY CBSCOLORADO.COM STAFF
UPDATED ON: DECEMBER 29, 2022 / 2:13 PM / CBS COLORADO

GET THE FREE APP

f t i o

As the heavy snow was falling late Wednesday night in Thornton, some folks in Thornton came to the aid of a stuck driver off of 104th Avenue.



CBS

NEWS > TRANSPORTATION

Metro Denver's traffic congestion will go from bad to worse, study predicts

Amount of time stuck in jams will nearly double over next 20 years

f t i o

Stalling rush-hour traffic moves along on Interstate 29 near Speer Boulevard and West 23rd Avenue on Sept. 25, 2019.

By ALDO SVILDI | asvaid@denverpost.com | The Denver Post
October 17, 2019 at 6:00 a.m.

The Colorado Sun

NEWS > ENVIRONMENT

Colorado is falling behind on its mandate to cut greenhouse gases

New state assessment shows big gaps in goals for transportation emissions and lag in finalizing closures of fossil fuel power plants

Michael Booth | 4:08 AM MDT on Sep 29, 2022

Credibility: Original Reporting Sources Cited

Interstate 70 traffic soon on Thursday, April 21, 2022, near Denver. (Hugh Carey, The Colorado Sun)

Major Issues Now

**Congestion,
Safety,
Reliability**



**Air Quality and
GHG Emissions**



**Disconnected
Communities**



Compounded by Population Gain



**From 2020 to 2050, an
additional 3 million people are
expected to live and commute
along the Front Range**

What is Front Range Passenger Rail?

- ▶ **New inter-city train service.**
- ▶ **Initial service:** Pueblo through Denver and north to Fort Collins, with stops along the way.
- ▶ **Long-term vision:** connecting to New Mexico and Wyoming.
- ▶ **Using existing tracks** shared with freight railroads to minimize costs and accelerate the service start date.



Commuter Rail

Serves one metropolitan area connecting suburbs to an urban core.



VS

Inter-City Rail

Connects cities across the state.



2-4 Miles	STATION DISTANCE	20-30+ Miles
35-45 Miles Per Hour	AVERAGE SPEED	45-55+ Miles Per Hour*
20-75 Miles	SERVICE LENGTH	50-300+ Miles / < 750 Miles

**Average running speed between stops is 65-90 Miles Per Hour*

Benefits of New Passenger Rail



Reliable Travel

A more reliable
and consistent
travel
experience



Connected Communities

Better
connections
along the
Front Range



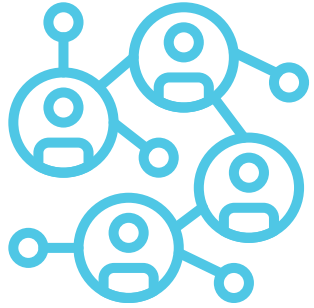
Economic Vitality

Investments
that support
local
economies



Sustainable Growth

Solutions that
support a
sustainable
future



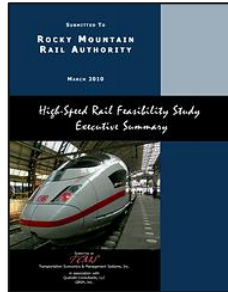
Connecting Coloradans to Opportunities, Adventure, and Each Other

- ➔ Working Professionals
- ➔ College Students
- ➔ People with Disabilities

- ➔ Families
- ➔ Sports Fans
- ➔ Festival-Goers
- ➔ Tourists

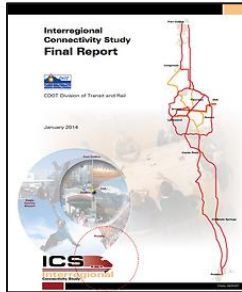
- ➔ Older Adults and Veterans
- ➔ People without Cars
- ➔ Urban Explorers

History of Front Range Passenger Rail



10 Years of Visionary Planning

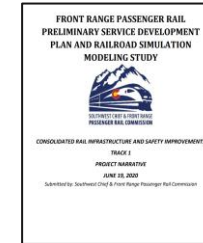
2010-2020



**SOUTHWEST CHIEF & FRONT RANGE
PASSENGER RAIL COMMISSION**

Rail Commission

2017



**Service
Development
Plan Grant**

2020



**District
Established**

2021

2014
Save the Chief

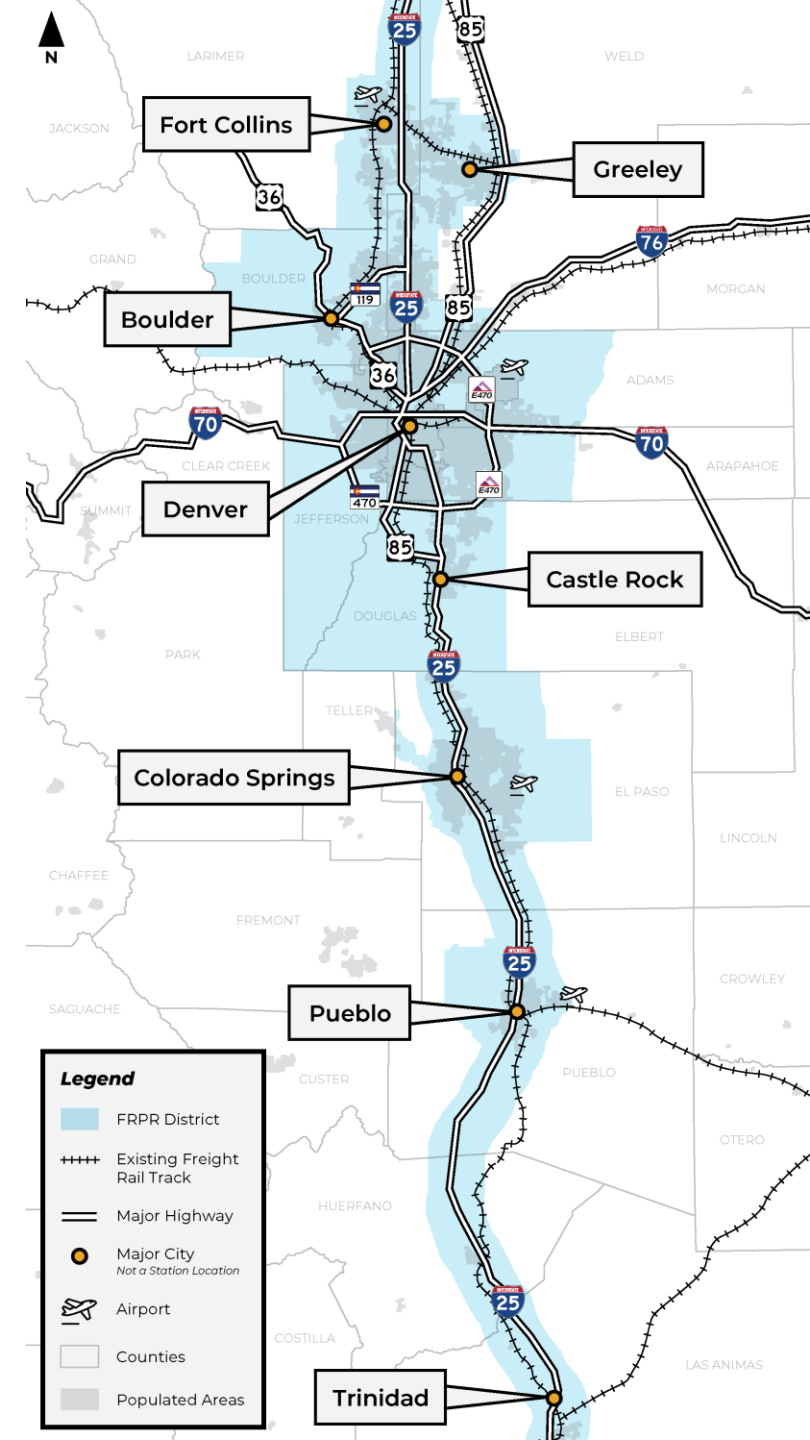


2020
**Alternatives
Evaluation**



What is the FRPR District?

- Created by Colorado Legislature in 2021.
- New local government with the mission to finance, design, construct, operate a passenger rail service along the Front Range.
- Following voter approval, can levy taxes to finance the rail system.
- Working with local communities to develop train stations.



District Board of Directors

MPO/COG

Representatives (10)

- Denver Regional Council of Governments
- Pikes Peak Area Council of Governments
- North Front Range Metropolitan Planning Council
- Pueblo Area Council of Governments
- South Central Council of Governments COG

Governor Appointments (6)

CDOT (1)

Ex Officio (7)

- BNSF Railway
- Union Pacific Railroad
- Amtrak
- RTD
- I-70 Mountain Corridor Coalition
- State of New Mexico
- State of Wyoming

Once-in-a-Lifetime Opportunity

- ▶ Foundation of 15 years of advocacy and planning.
- ▶ District established.
- ▶ Strong state support.
- ▶ New passenger rail programs and funding established through Bipartisan Infrastructure Law.



FRPR
FRONT RANGE
PASSENGER
RAIL





Where We Are Today

Corridor Identification and Development Program (FRA)

- ▶ Comprehensive inter-city passenger rail planning program.
 - ▶ Creates a pipeline of projects ready for implementation.
 - ▶ Opens up millions of dollars in new funding – 90/10 federal match.
- ▶ Submitted Application in March 2023.
 - ▶ Notice of Acceptance in Fall 2023.
 - ▶ If accepted into the Program, District receives initial \$500,000.



Service Development Plan



**Began Late 2022 and
Concludes Mid/Late 2024**



Pueblo to Fort Collins

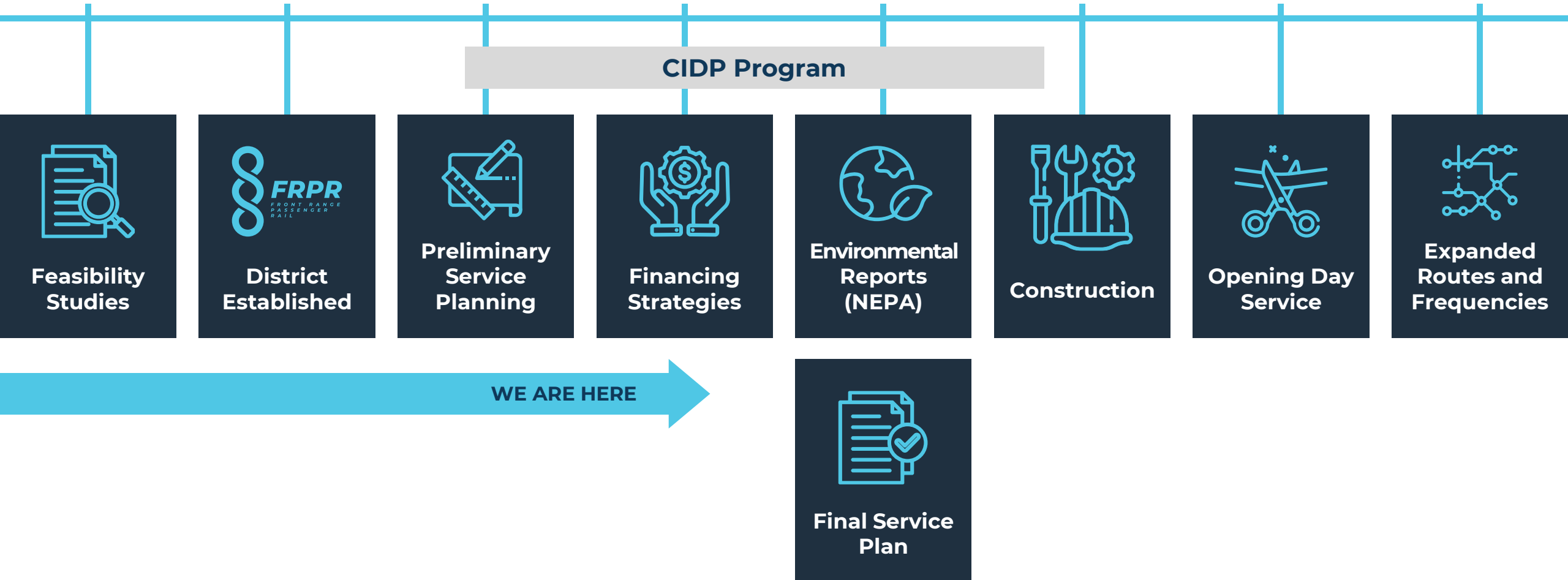


**Implementation Plan
for Initial FRPR Service**

The SDP process defines:

- Station Locations
- Service Frequency
- Onboard Amenities
- Ticket Price
- Infrastructure Improvements
- Costs and Financing Plan
- Railroad Partnerships

Route to Front Range Passenger Rail



4 Year Plan Leading into a Ballot Initiative

2022

District Stand-Up

- ▶ Board Directors Appointed
- ▶ Express Interest in Corridor Identification and Development Program (CIDP)

2023

SDP, Communications, and Partner Coordination

- ▶ Service Development Planning
- ▶ Initial Briefings
- ▶ Board Identifies an Operator
- ▶ Application and Acceptance into CIDP; receive \$500k

2024

SDP and Outreach

- ▶ Service Development Plan (Finished Late 2024)
- ▶ O&M and Capital Costs Determined
- ▶ Financing Plan Determined
- ▶ Phase II CIDP \$ (90/10 Match)

2025

2025 – NWR, Local Govt Outreach, NEPA

- ▶ Begin Joint Operations Plan with RTD for NWR Segment
- ▶ Local Government Outreach Going Into Ballot
- ▶ NEPA
- ▶ Freight Railroad Agreements
- ▶ Phase III CIDP \$ (80/20 Match)

2026

District Ballot Initiative

Partnerships and Local Coordination



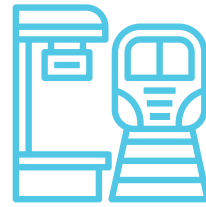
Financial Support

- ▶ Local governments
- ▶ State legislature
- ▶ Governor's office
- ▶ Colorado DC delegation
- ▶ USDOT and FRA



Generating Public Support for Ballot Measure

- ▶ Chambers of commerce
- ▶ Environmental, Accessibility, Active Transportation, and Equity Orgs
- ▶ Local governments
- ▶ State legislature
- ▶ Governor's office



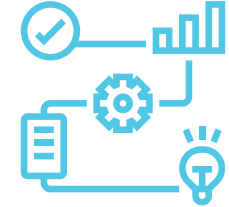
Station Planning and Station Improvement Districts

- ▶ Local governments
- ▶ Downtown business organizations
- ▶ Landowners
- ▶ Developers



Multimodal Connectivity

- ▶ Local governments
- ▶ MPOs/COGs
- ▶ CDOT
- ▶ Transit agencies



Planning, Design, Engineering, Implementation

- ▶ Freight railroads
- ▶ FRA
- ▶ CDOT
- ▶ RTD



Get On Board

Voice Your Support for FRPR



Network

Tell your local representatives and colleagues why FRPR is a top priority.



Collaborate

Identify supporter organizations and set up briefing opportunities.



Ideate

Provide input on the Service Development Plan.

Stay in Touch

Andy Karsian

General Manager

Andy.Karsian@frprdistrict.com

(303) 883-9381

Chrissy Breit

Program Coordinator

Chrissy.Breit@frprdistrict.com

(303) 903-5724



Join our Mailing List:

**RideThe
FrontRange.com**

